



---

---

## How do I get involved? *Jumping into the Allotrope Community*

Corey E Bakalarski, Ph.D.

Bioinformatics Scientist, Genentech

Business Product Owner (Ontologies & Data Formats), Allotrope Foundation

# What is Allotrope?



# Allotrope is a Community

**community** noun, often attributive

com·mu·ni·ty | \ kə-'myū-nə-tē  \

*plural communities*

- c** : a body of persons of common and especially professional interests scattered through a larger society
  - // the academic *community*
  - // the scientific *community*

For the  
Community

By the  
Community



# Allotrope Succeeds When We Work Together



Scientific Subject  
Matter Experts



Informatics Experts &  
Software Developers



Business & Strategic  
Experts



Semantic & Knowledge  
Engineers



# Learning More and Getting Involved

Attend an  
Allotrope  
Connect  
Meeting

Talk to  
Community  
Leaders

Tap into  
Resources

Join a  
Working  
Group

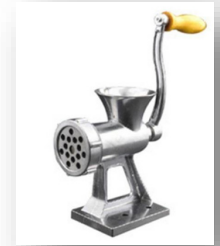
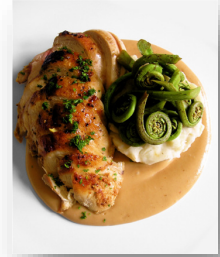
Contributing to Allotrope Projects



# Attend an Allotrope Connect Meeting



- Public Session
  - See how Allotrope is being used today
- Workshops
  - Mold the direction of the community
- After the Meeting
  - Apply ideas to your daily work



# Talk to Community Leaders

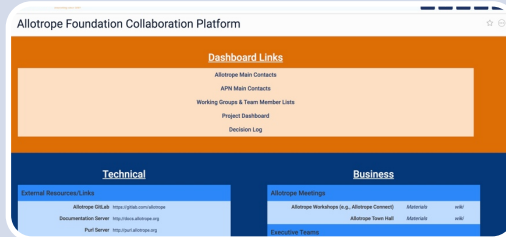


# Tap into Resources



Allotrope Website  
[www.allotrope.org](http://www.allotrope.org)

*Who we are and what we do*



Client Connect

*How we operate as a community*



Monthly Virtual Town Hall Meetings

*Keeping connected to news and happenings*



# Tap into Resources

Welcome to BioPortal, the world's most comprehensive repository of biomedical ontologies

Search for a class

Find an ontology

Enter a class, e.g. Malaria

Start typing ontology names, then choose from list

Advanced Search

Browse Ontologies

Ontology Visits (September 2019)

BiPortal Statistics

Category	Count
Ontologies	817
Classes	8,783,954
Resources Indexed	48
Indexed Records	39,537

BioPortal and OLS

*Browse Allotrope Foundation Ontologies*

Projects

Your projects: 01 Starred projects 02 Explore projects

All Recent

- Allotrope Open Source / **allotrope-ols** - Allotrope Foundation Product Suite
- Allotrope Data / **allotrope-data** - Allotrope Foundation Ontologies
- Allotrope Open Source / **allotrope-olts** - Documentation of the Allotrope processes
- Allotrope Open Source / **allotrope-olts** - Allotrope Ontology QA Tools
- Allotrope Data / **allotrope-data** - Allotrope Data Models
- allotrope-review / **allotrope-review** - Allotrope LLC Open Model Review

GitLab

*Contribute to technical projects and models*

Allotrope Developers' Guide

Welcome to the developer documentation for the Allotrope Foundation technologies. These documents describe the theory, application, and governance of each of the three ontologies of the Allotrope software suite.

- Allotrope Data Format (ADF)
- Allotrope Foundation Ontologies (AFO)
- Allotrope Data Models (ADM)

How Do I Get Started?

If you're not sure what Allotrope is or how it works, start with What is Allotrope?

If you are a software developer and are interested in how to apply the Allotrope Data Format to your projects, start with the ADF Tutorial.

For information on how to contribute terms to the Allotrope Foundation Ontologies or new data models for inclusion into the Allotrope Data Model catalog, start with an Overview of the AFO/ADM Governance Processes.

Contents

Allotrope Developer's Guide

*How to get started developing with Allotrope*

Allotrope PURL Service

Content Negotation is employed via the ACCEPT header.

HEADER	Returned Content
Accept: text/html	HTML
Accept: application/javascript	HTML
Accept: text/turtle	TTL
Accept: application/n-triple	TTL
(DEFAULT)	TTL

Note: when HTML content is not available, the TTL content is returned.

Direct links of all ontologies

High note: "Open Web of..." to download Ontologies are grouped by category, ordered by level of maturity and date of release. AFO - Allotrope Foundation Ontologies, ADF - Allotrope Data Format, ADM - Allotrope Data Models

AFNC

purl.allotrope.org

*Allotrope's semantic knowledge hub*



# Getting Things Done

## Allotrope Core

- Strategy
- Communications
- Technical Development

## Allotrope Community

- Empower Converter WG
- NMR WG

## Vendor Projects

- Internal Member Projects
- Commercial Products



# Are you a Scientist (SME)?

Chromatography  
WG

Mass  
Spectrometry  
WG

Sample  
Preparation WG

Modeling WG

(Your technique  
here)



# Are you a Technical Expert?

ADF WG

Semantic  
WG

Data  
Cube WG

Domain  
WGs



# More than Just Code

- You don't have to contribute code.
- Do you like to write?
  - Help with documentation
  - Help with communication and informing our community
- Do you like to plan?
  - Help organize meetings and town halls
- Do you like to organize?
  - Help maintain issue backlogs and prioritize work
- Do you like to help?
  - Help write tutorials and answer questions



# Are you a Business Strategy Expert?

Communications  
WG

Foundation  
Operations Team

Finance &  
Resources Team

Regulatory WG

Strategy WG

APN WG



# Resources

- Allotrope Website: <https://www.allotrope.org>
- Client Connect: <https://clientconnect.drinkerbiddle.com>
- Gitlab: <https://allotrope.gitlab.com>
- BioPortal: <https://bioportal.bioontology.org/>
- OLS: <https://www.ebi.ac.uk/ols/index>
- Dev Guide: <https://allotrope.gitlab.io/allotrope-dev-guide>
- PURL: <https://purl.allotrope.org>

