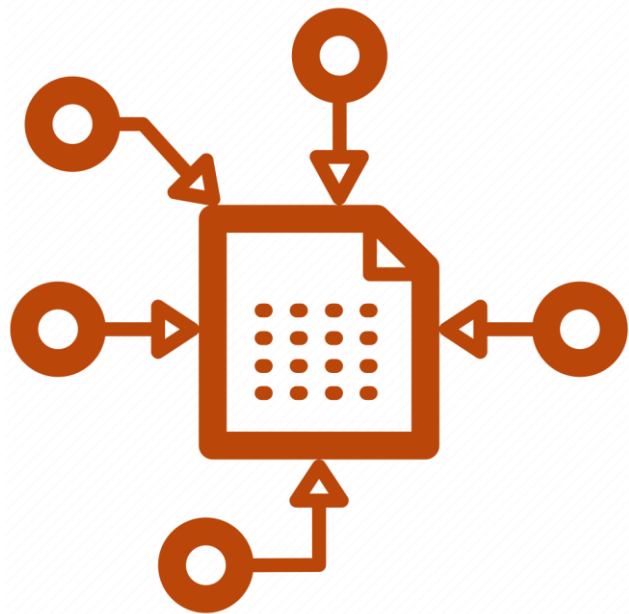


Shaping the Future of the Electronic Notebook (ELN)

How Can Allotrope Help Drive Digital Lab Integration to Enhance ELN Effectiveness ?

Nov 2024

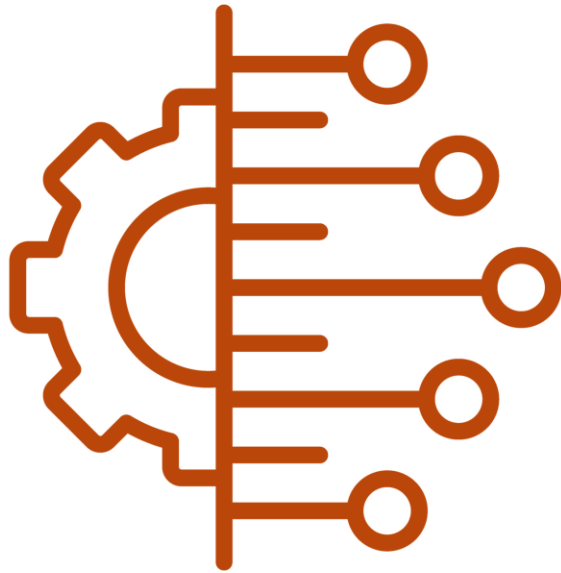
What is the role of the electronic notebook (ELN) in a future data-centric ecosystem ?



Data
Capture

- Which parts of ELNs would benefit from application of data standards to improve the quality and consistency of data capture ?
- How would you like to apply data standards to an ELN ?
 - Configurable templates and fields (user) ?
 - Implement natively in ELN (vendor) ?
- When would data standards not be appropriate for data capture in ELNs ?
- What role should Allotrope play in the standardization of ELN data capture ?

What is the role of the electronic notebook (ELN) in a future data-centric ecosystem ?



Data
Integration

- How will data standards simplify the design of interfaces between applications (e.g., ELN and instrument data sources) ?
- How generalizable could an ELN interface based on the ASM standard be ?
- What role should Allotrope play in the standardization of data integration with ELN ?

What is the role of the electronic notebook (ELN) in a future data-centric ecosystem ?



Data
Consumption

- Will data captured in ELN applications be moved to the cloud in the future for centralized access ?
- Will ELN data be transformed in the cloud as necessary to form data products (i.e., make it more analytics-ready) ?
- What are the most critical use cases for the consumption of ELN data ?
 - Search and data mining ?
 - Routine visualization, trending, and analytics ?
 - Modeling and machine learning ?
 - Prediction and generative AI ?
- What role should Allotrope play to facilitate the consumption of ELN data in the future ?